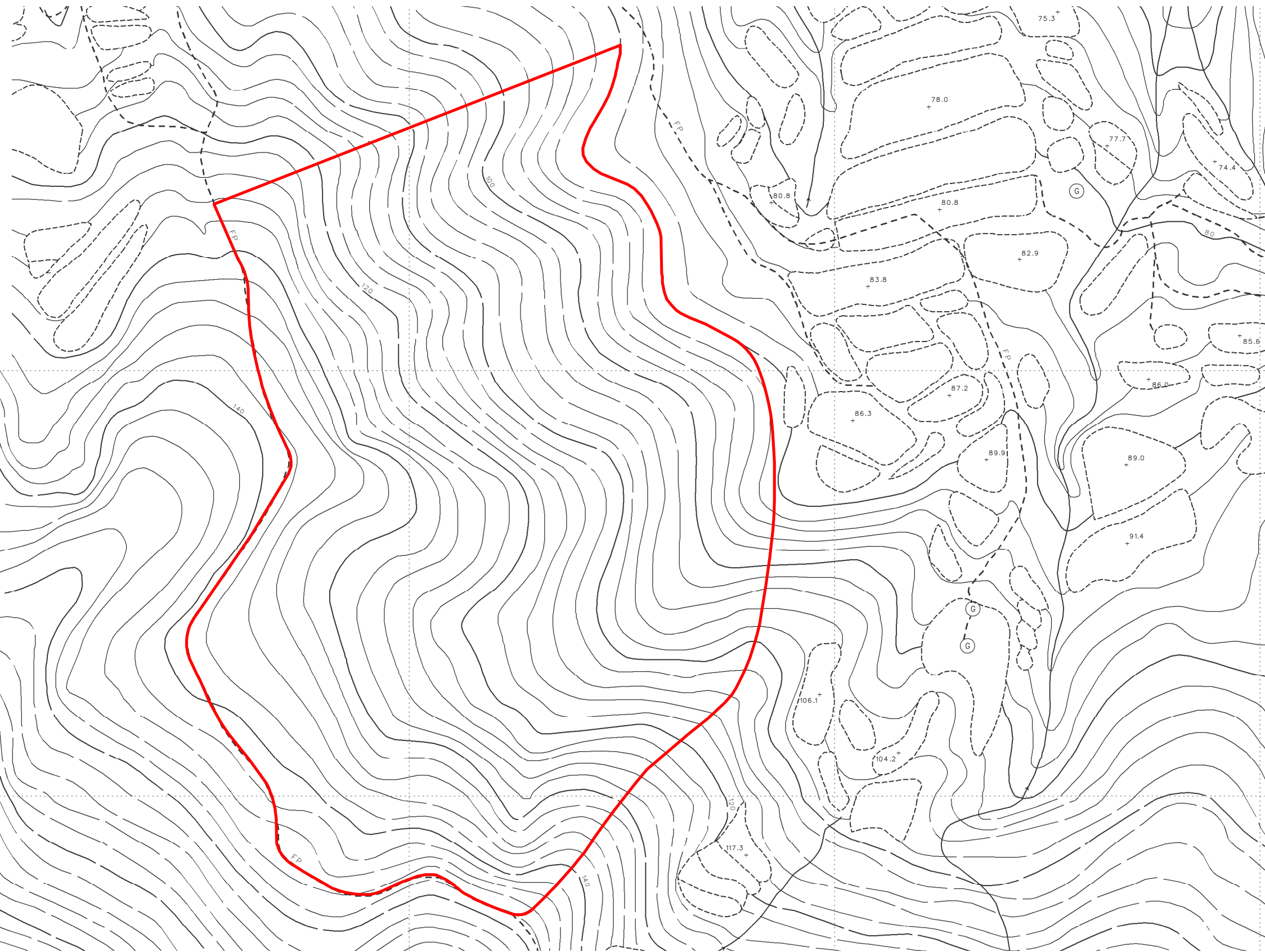
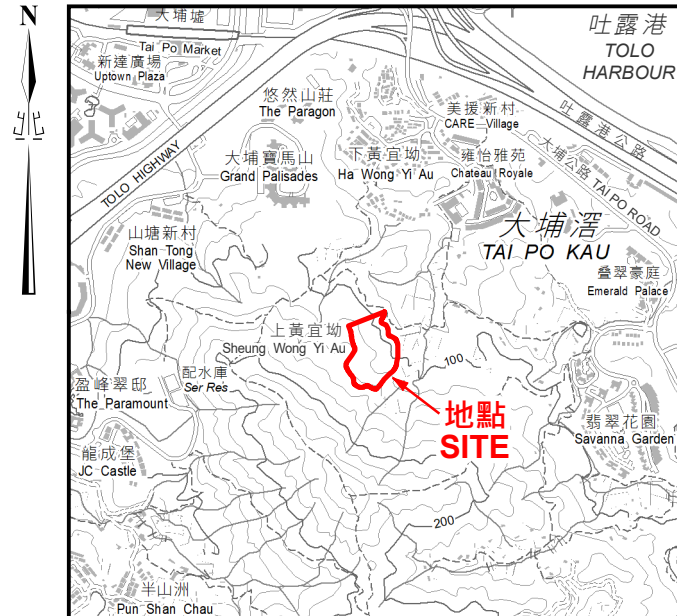


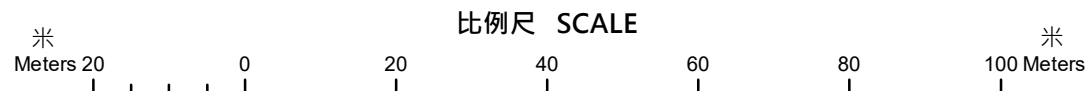
位置 LOCATION



上黃宜坳
SHEUNG WONG YI AU

圖例 LEGEND

 認可殯葬區
Permitted Burial Ground



只作識別用 FOR IDENTIFICATION PURPOSES ONLY
 地政總署測繪處
 Survey and Mapping Office, Lands Department
 圖則由大埔測量處繪製
 Plan Prepared by District Survey Office, Tai Po
 © 香港特別行政區政府 - 版權所有
 Copyright reserved - Hong Kong SAR Government

新界大埔認可殯葬區
 PERMITTED BURIAL GROUND, TAI PO, NEW TERRITORIES
 位置編碼 SITE CODE TP-S-12 (認可殯葬區編號 PBG SITE No. TP/S12)

檔案編號 File No. HAD HQ I(S)/11/38/12/4/6
 測量圖編號 Survey Sheet Nos. 7-NW-14B,14D,15A & 15C
 參考圖編號 Reference Plan No. TPM5756
 圖則編號 PLAN No. PBG-TP-S-12(A)